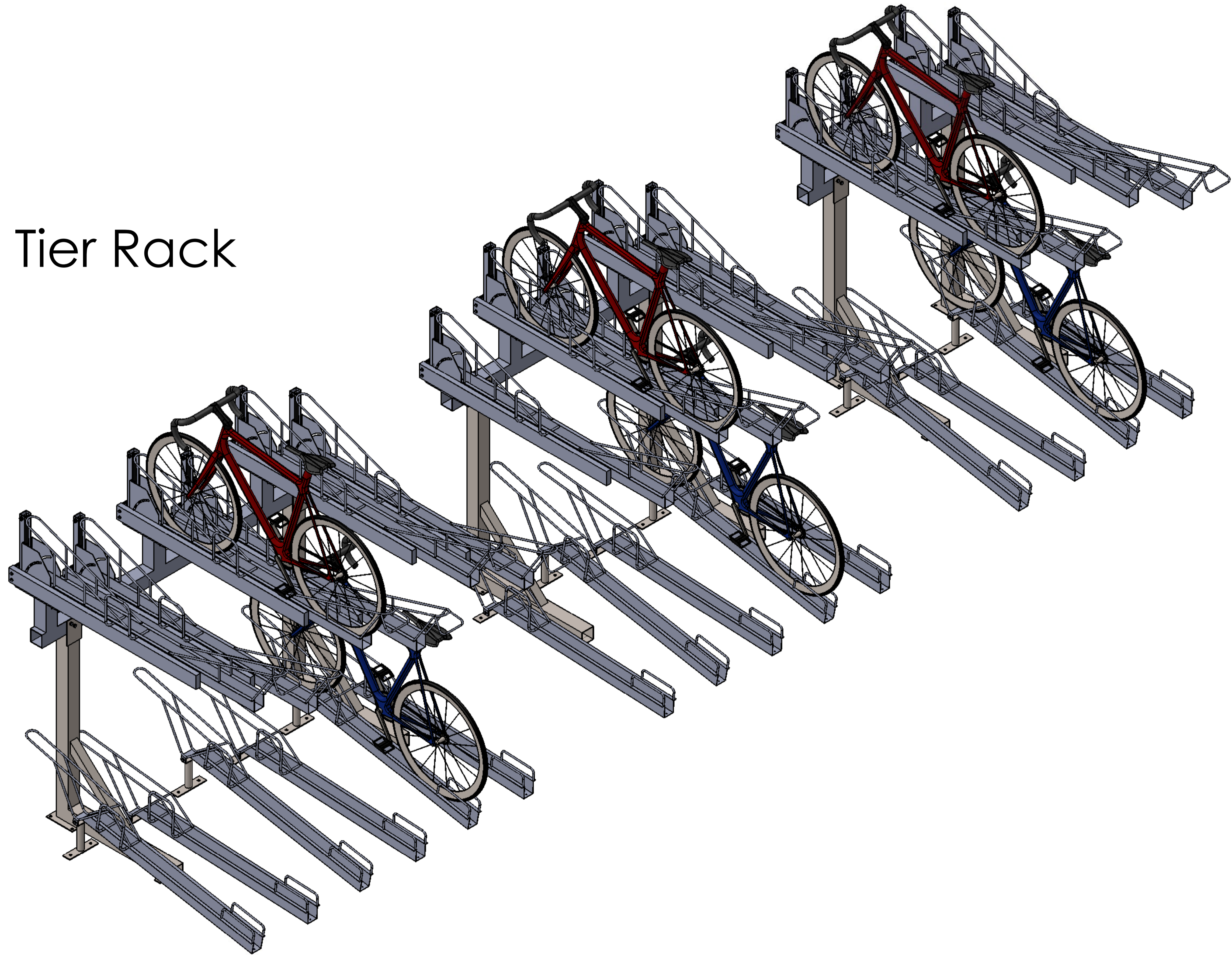
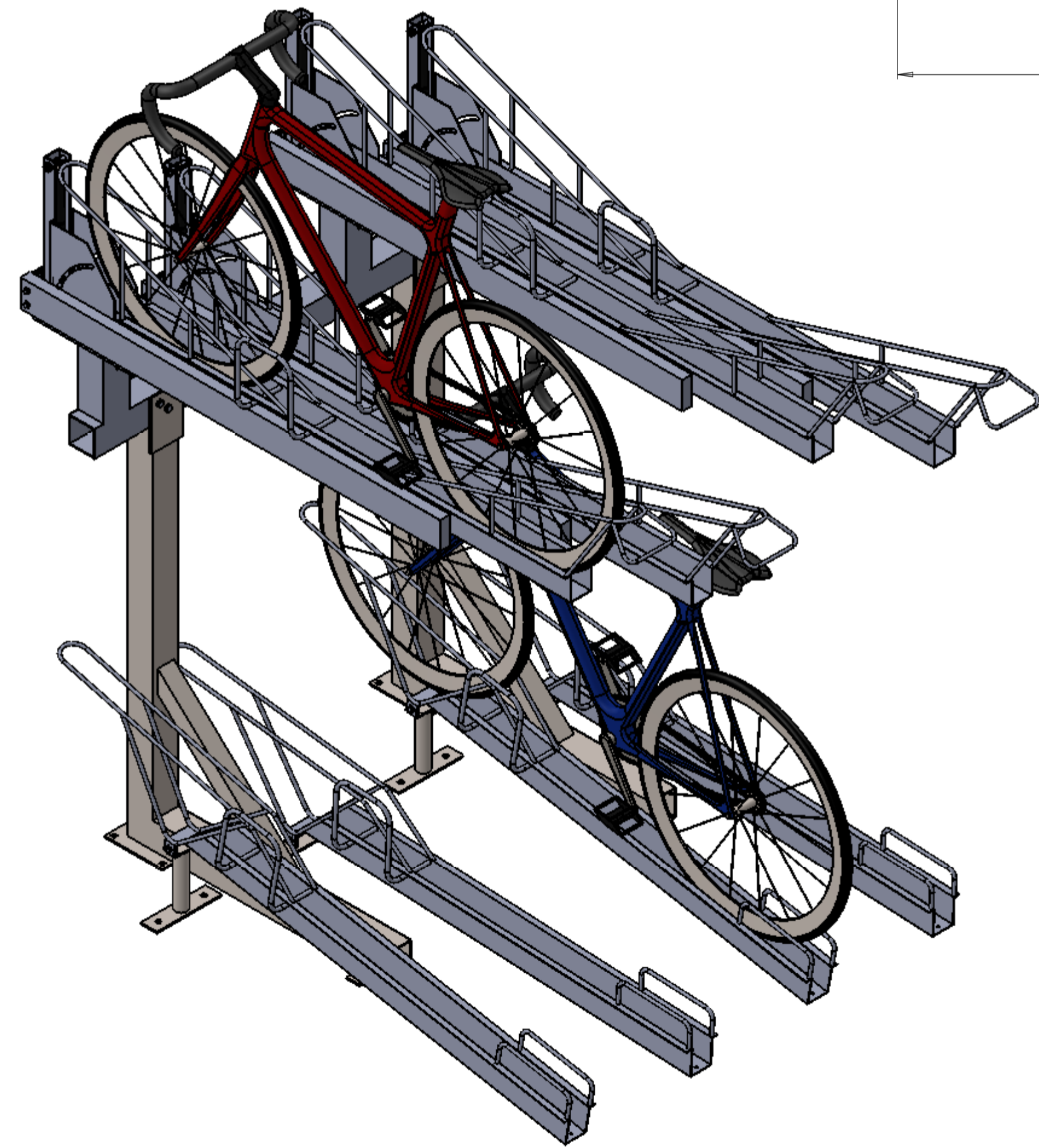
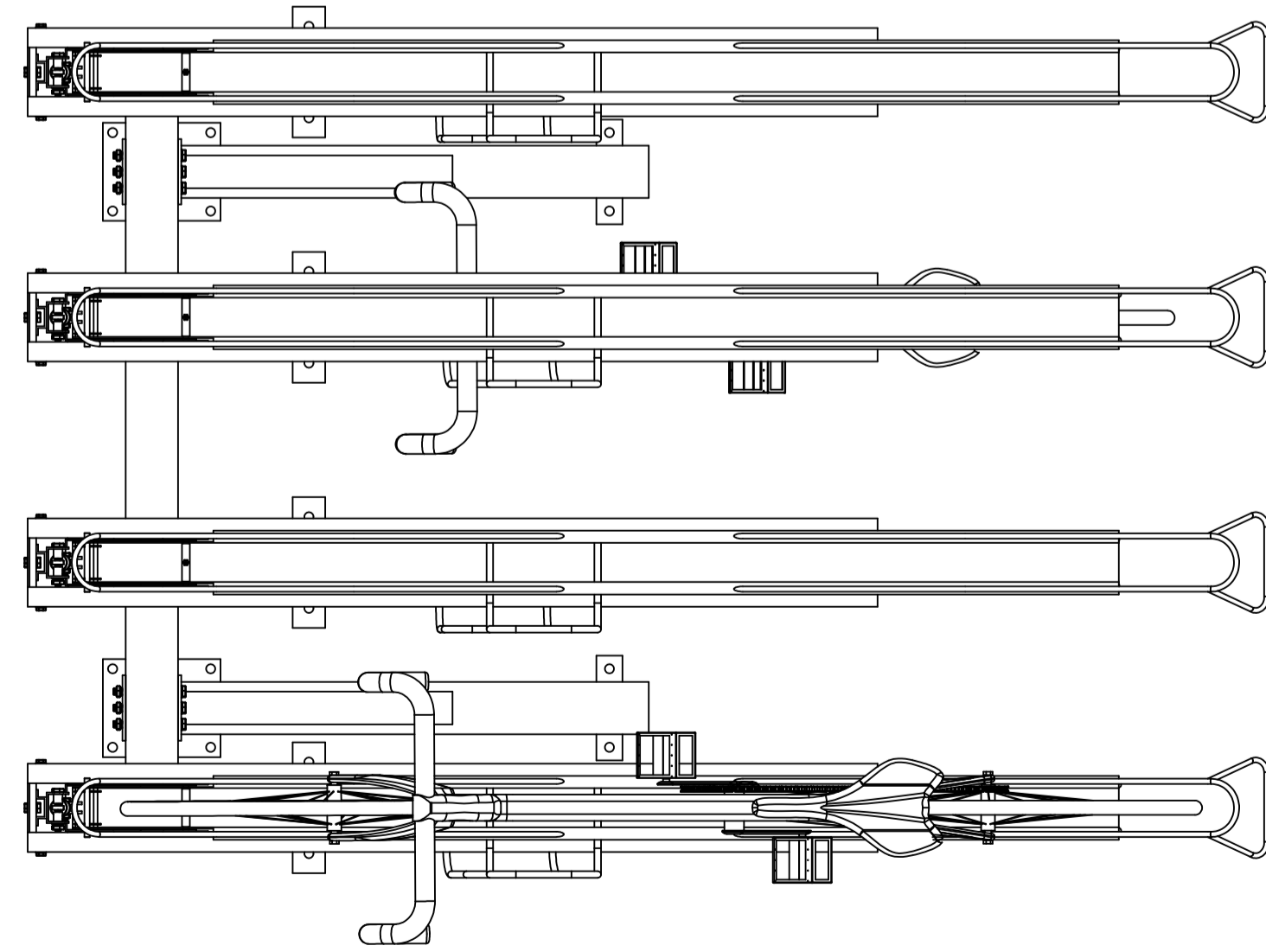
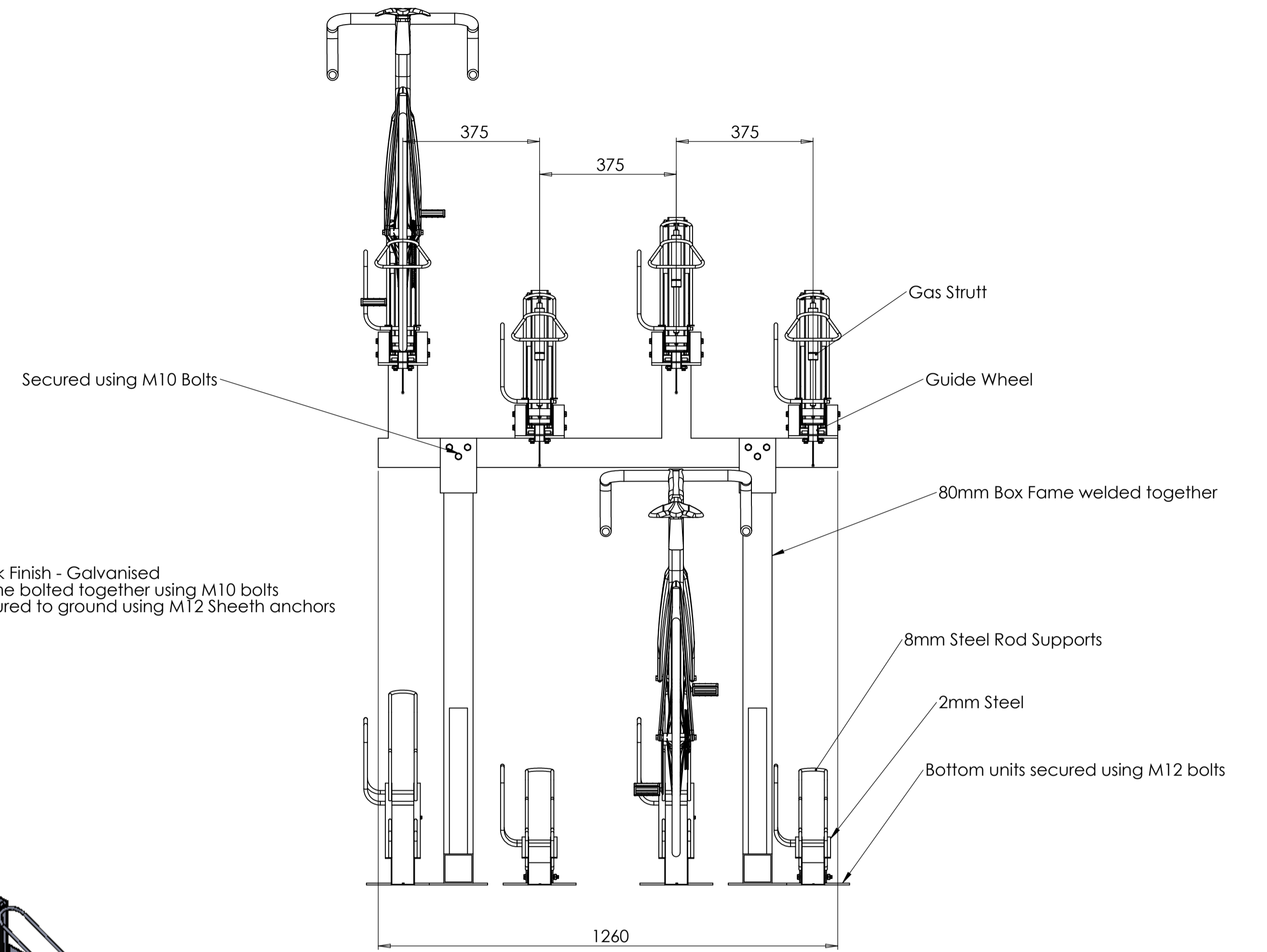
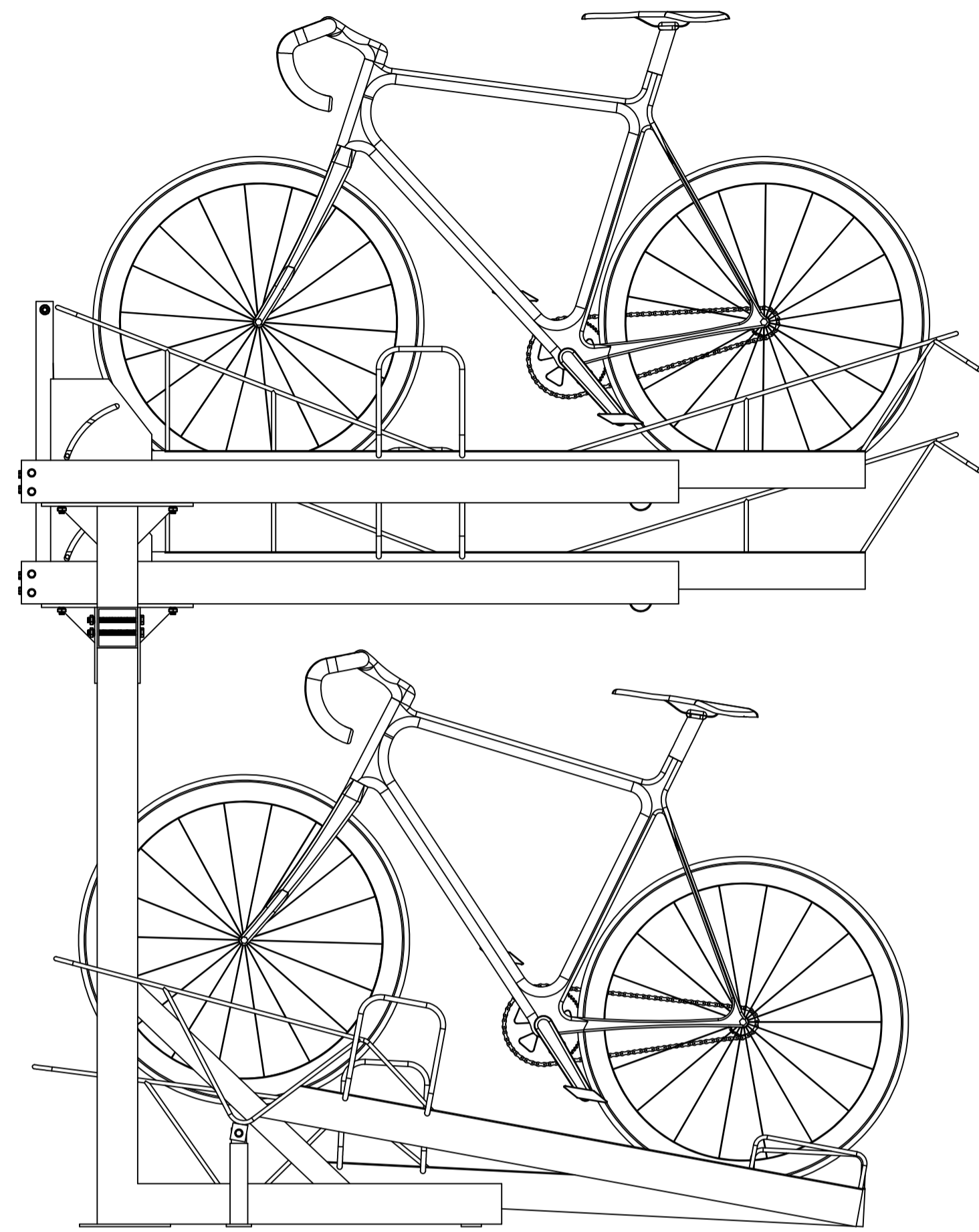
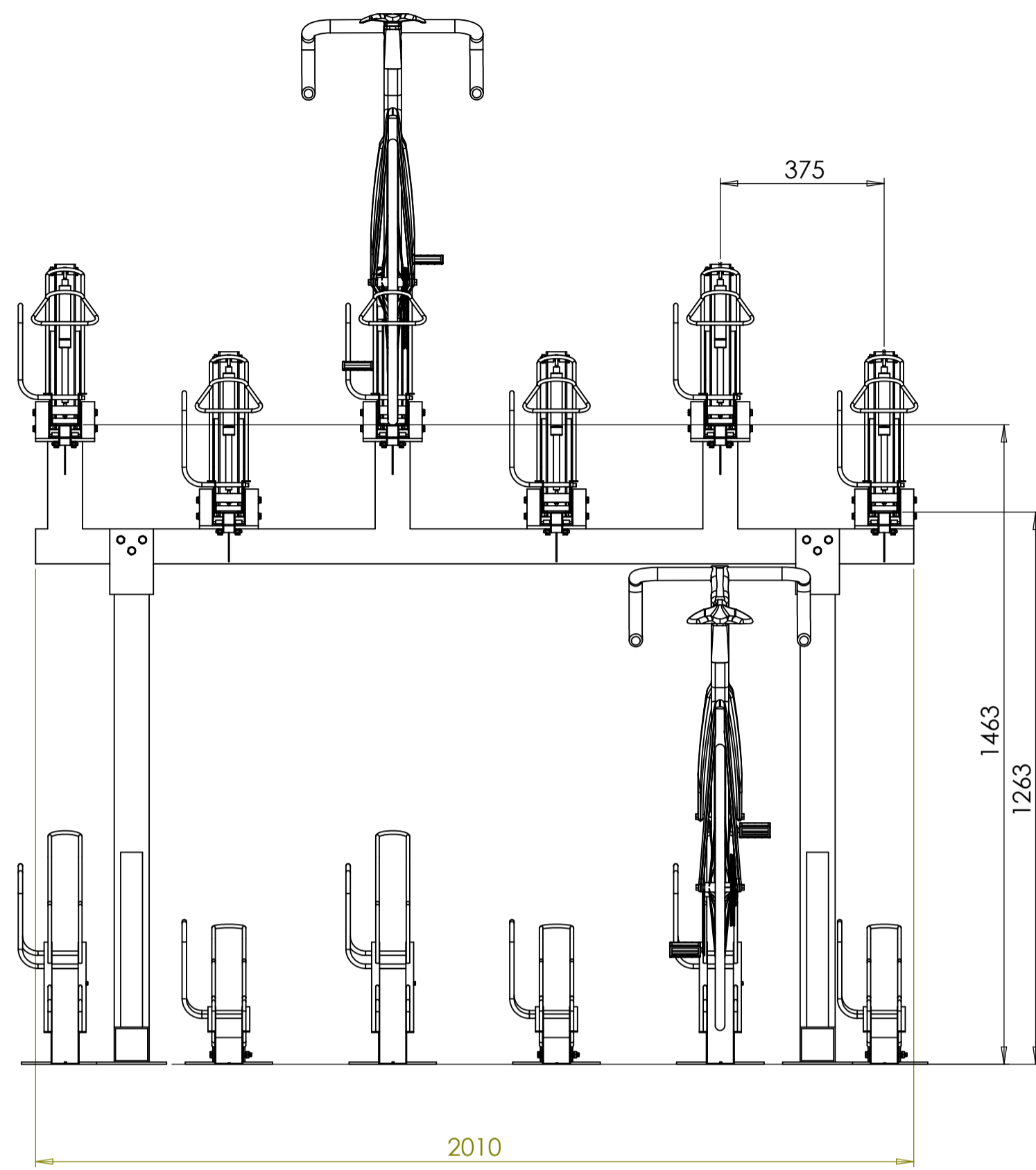


Two Tier Rack

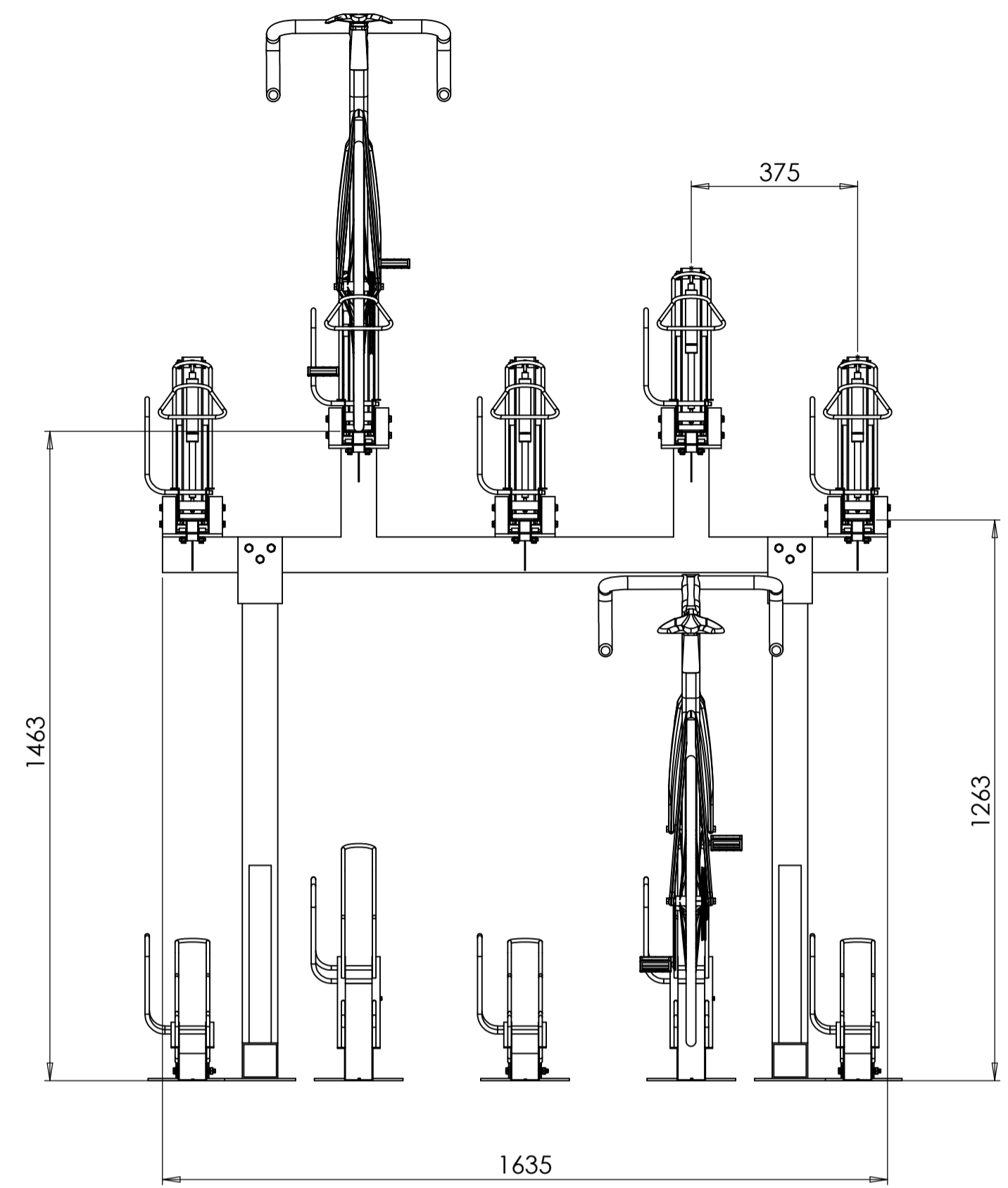




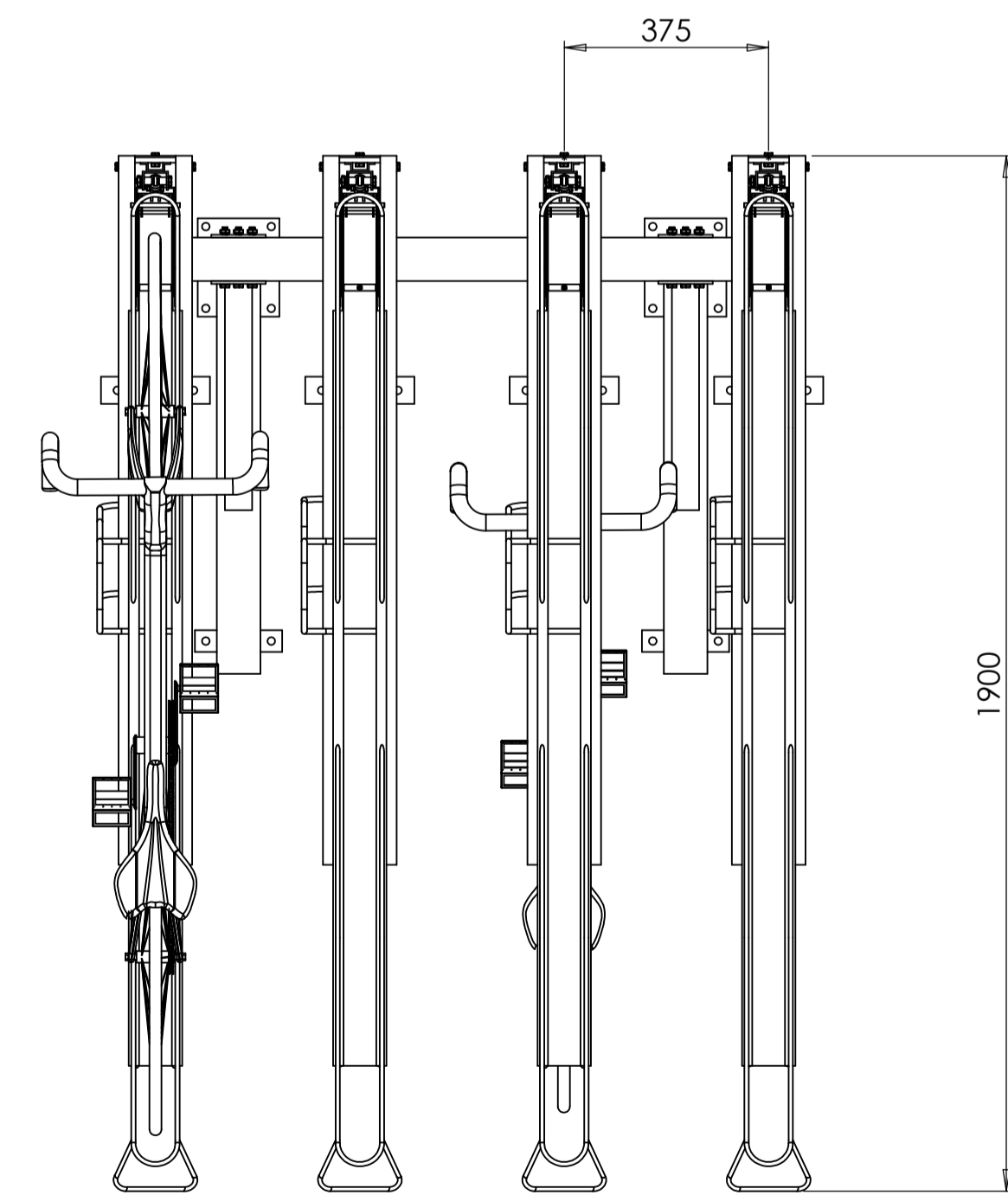
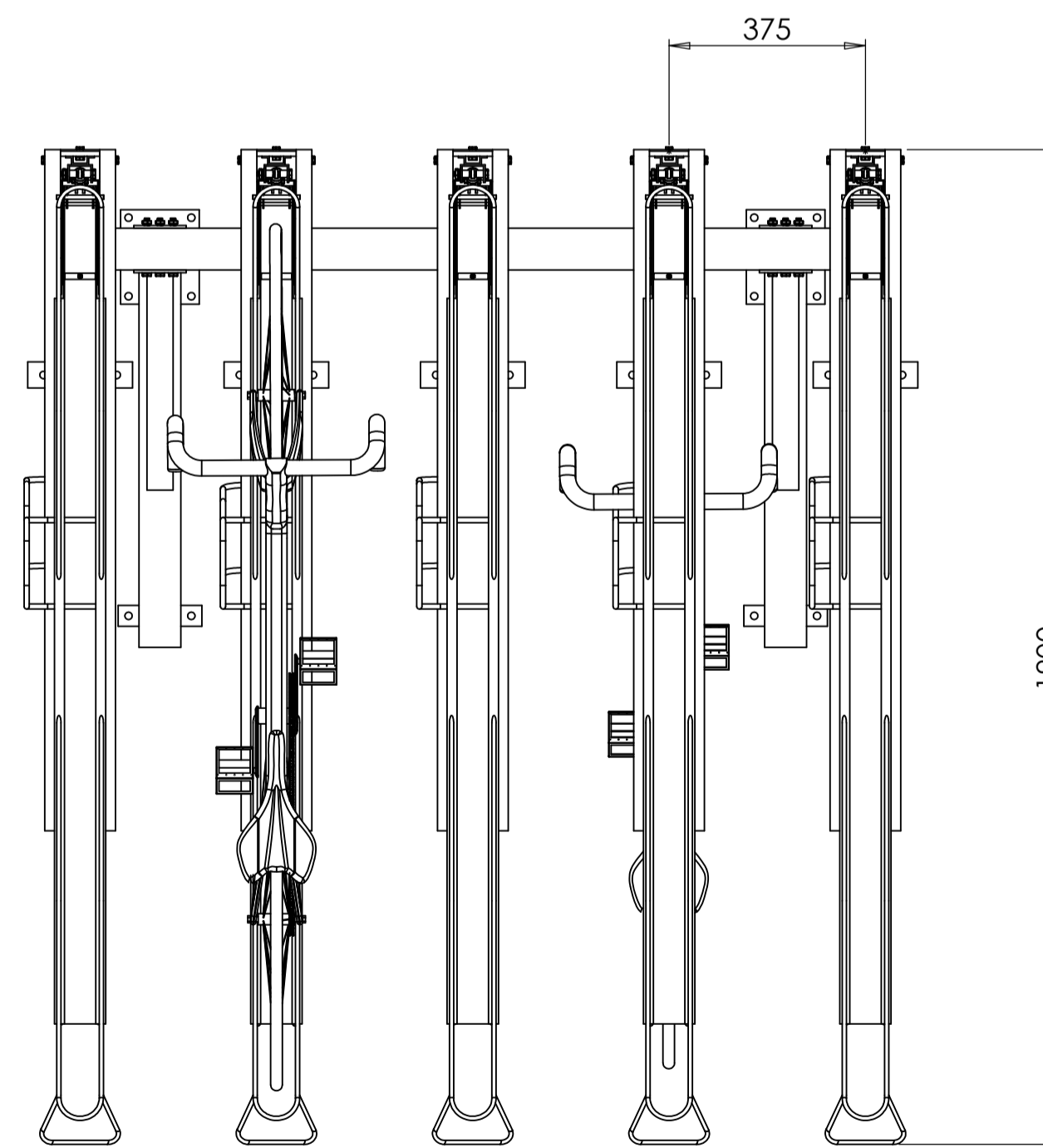
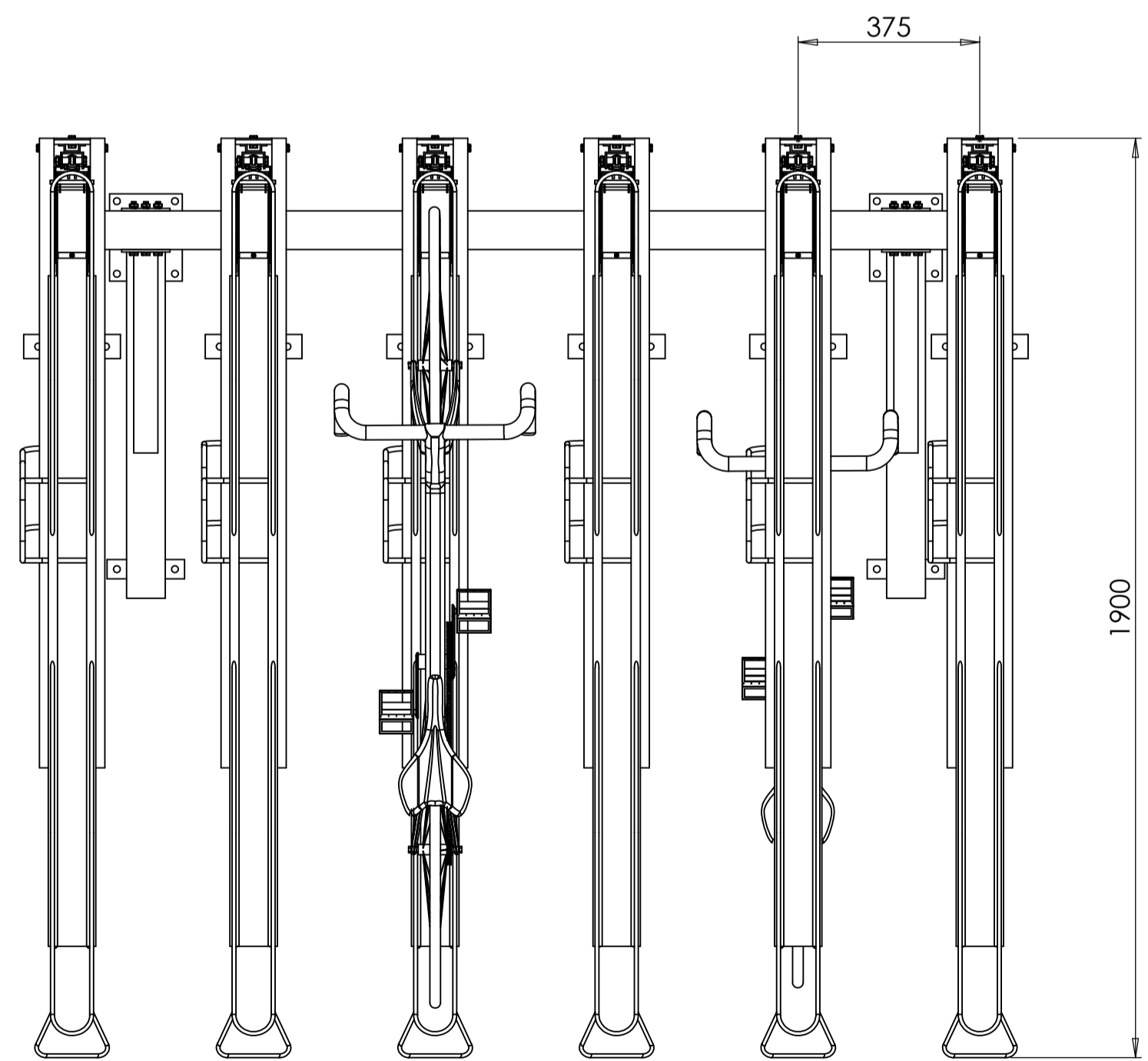
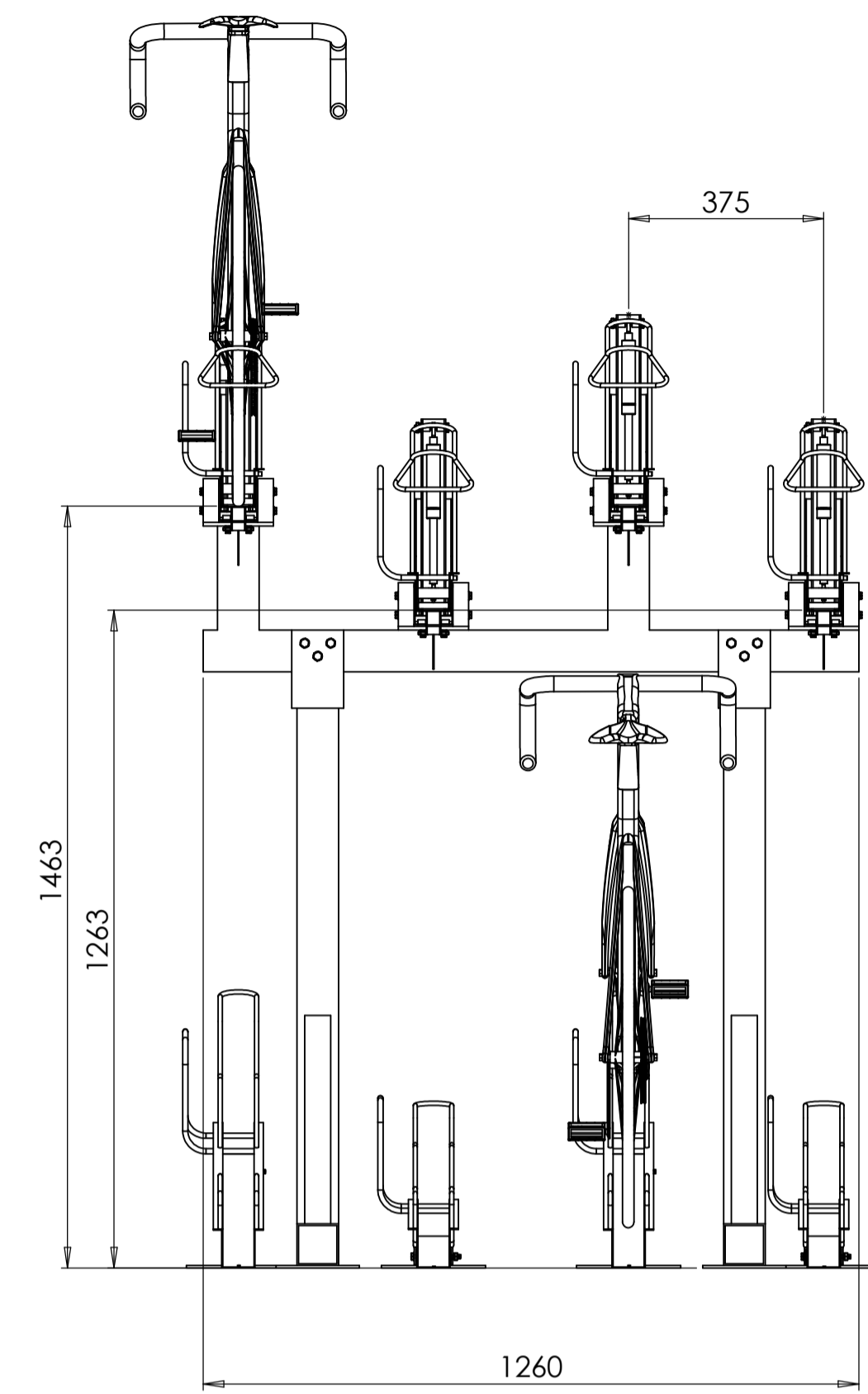
6 up 6 down
12 Space

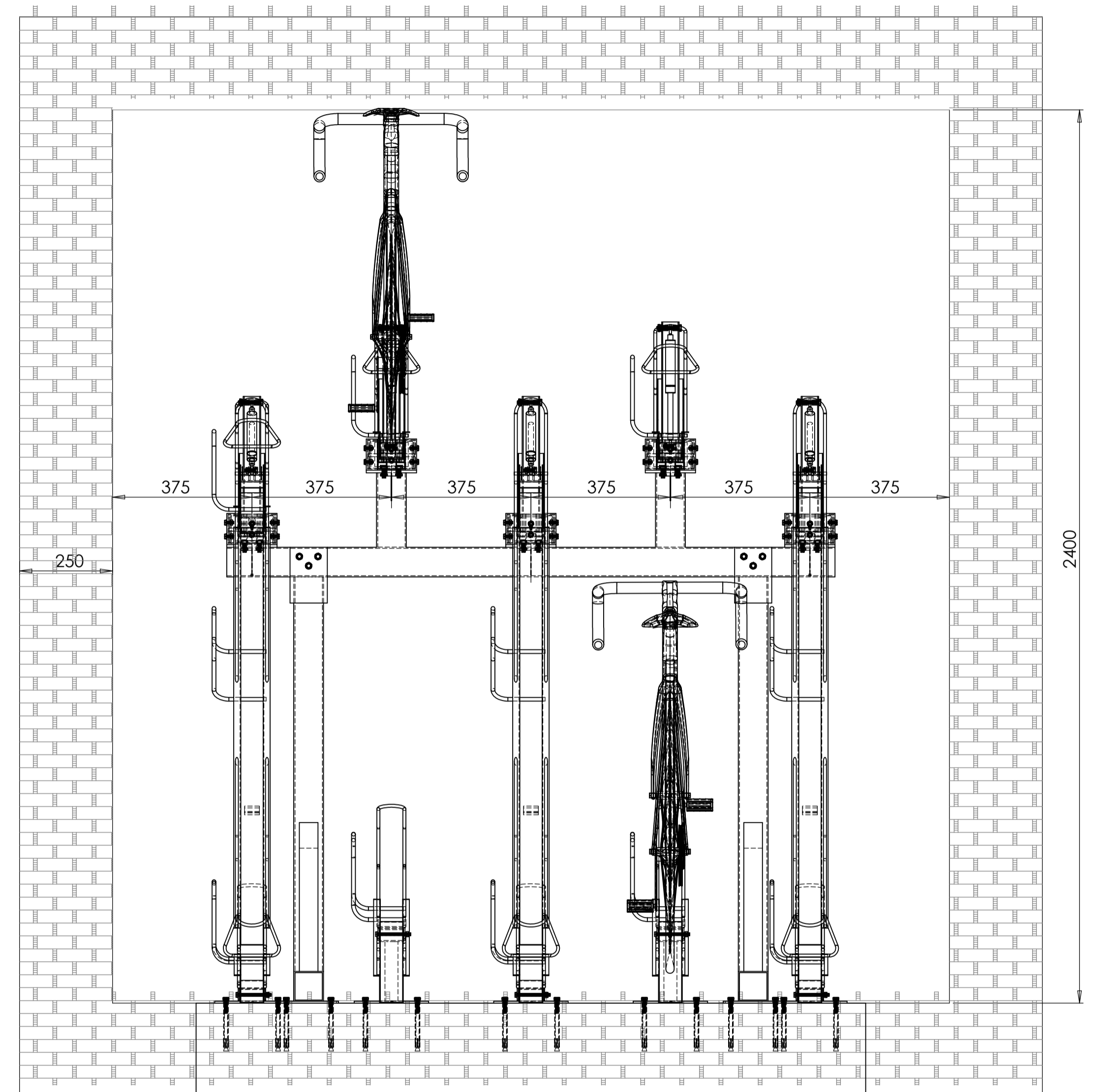
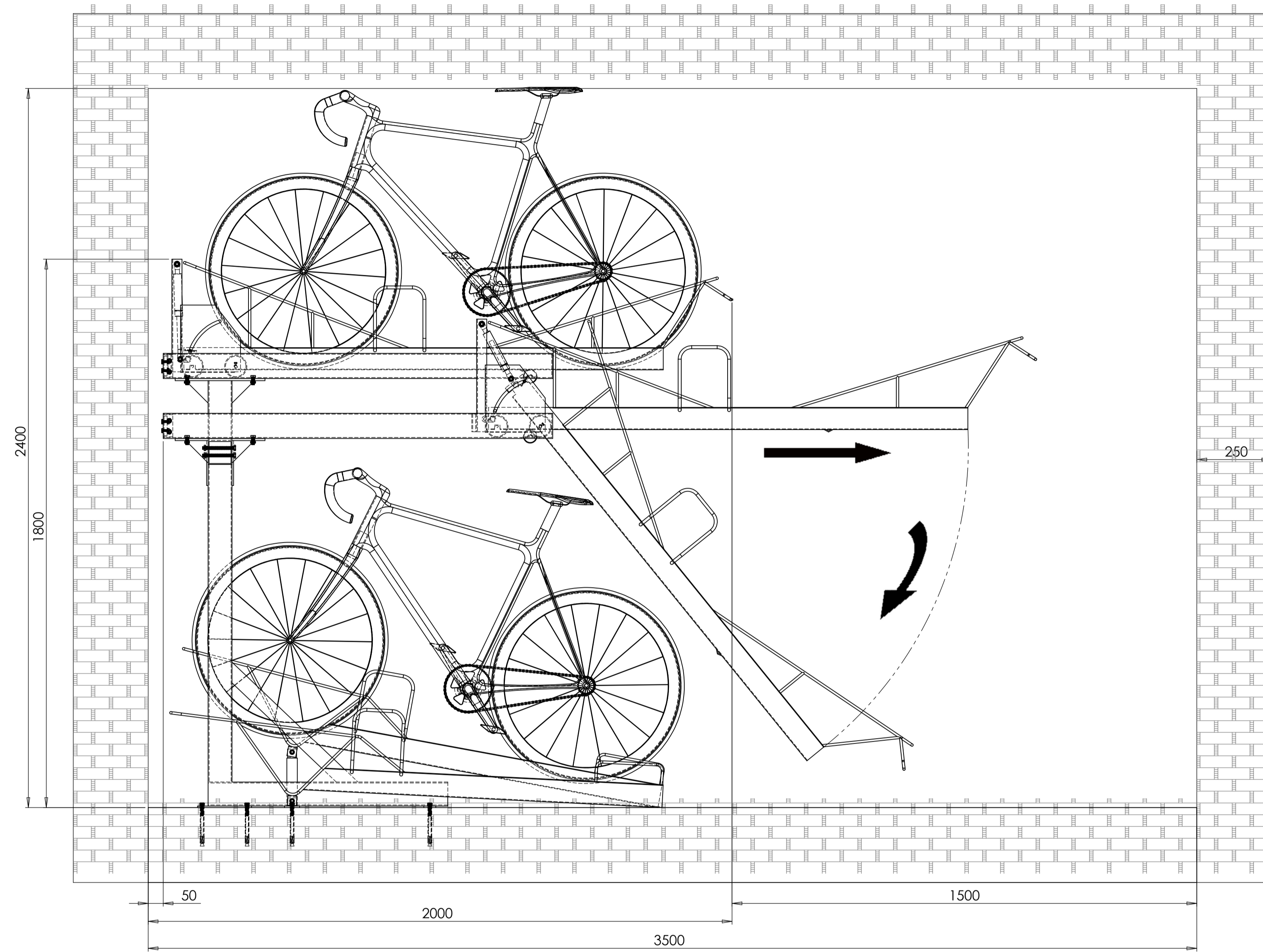


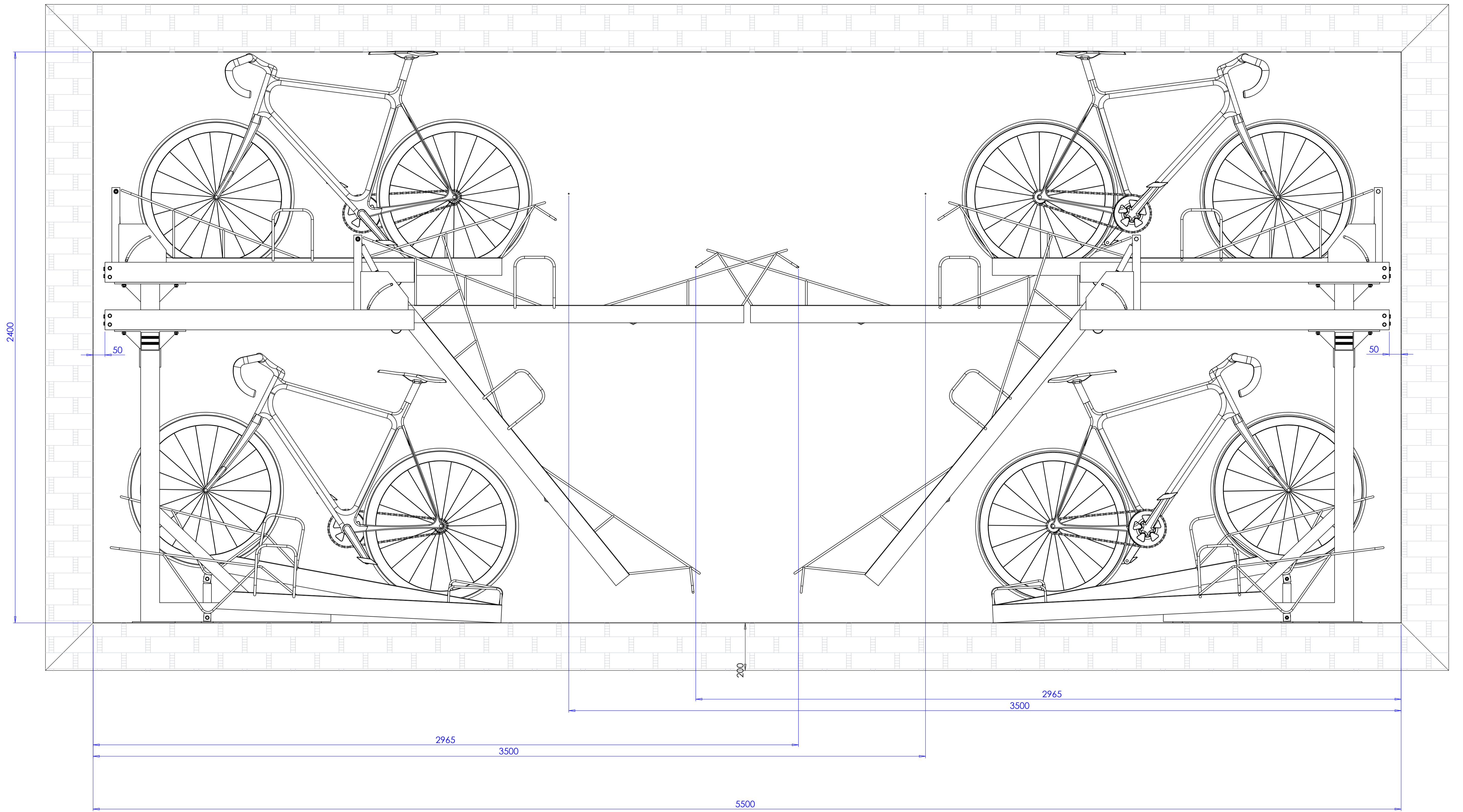
5 up 5 down
10 Space

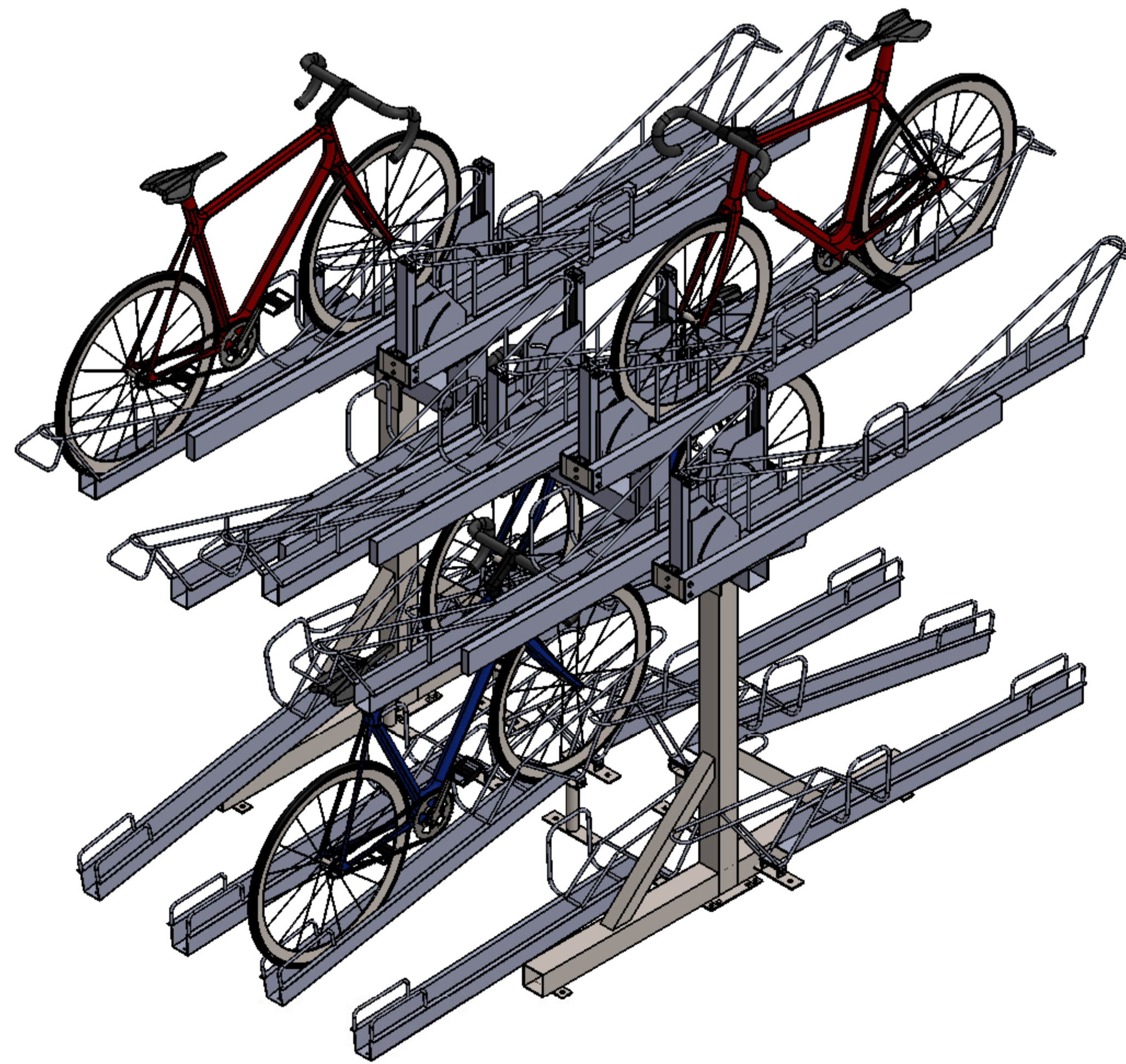
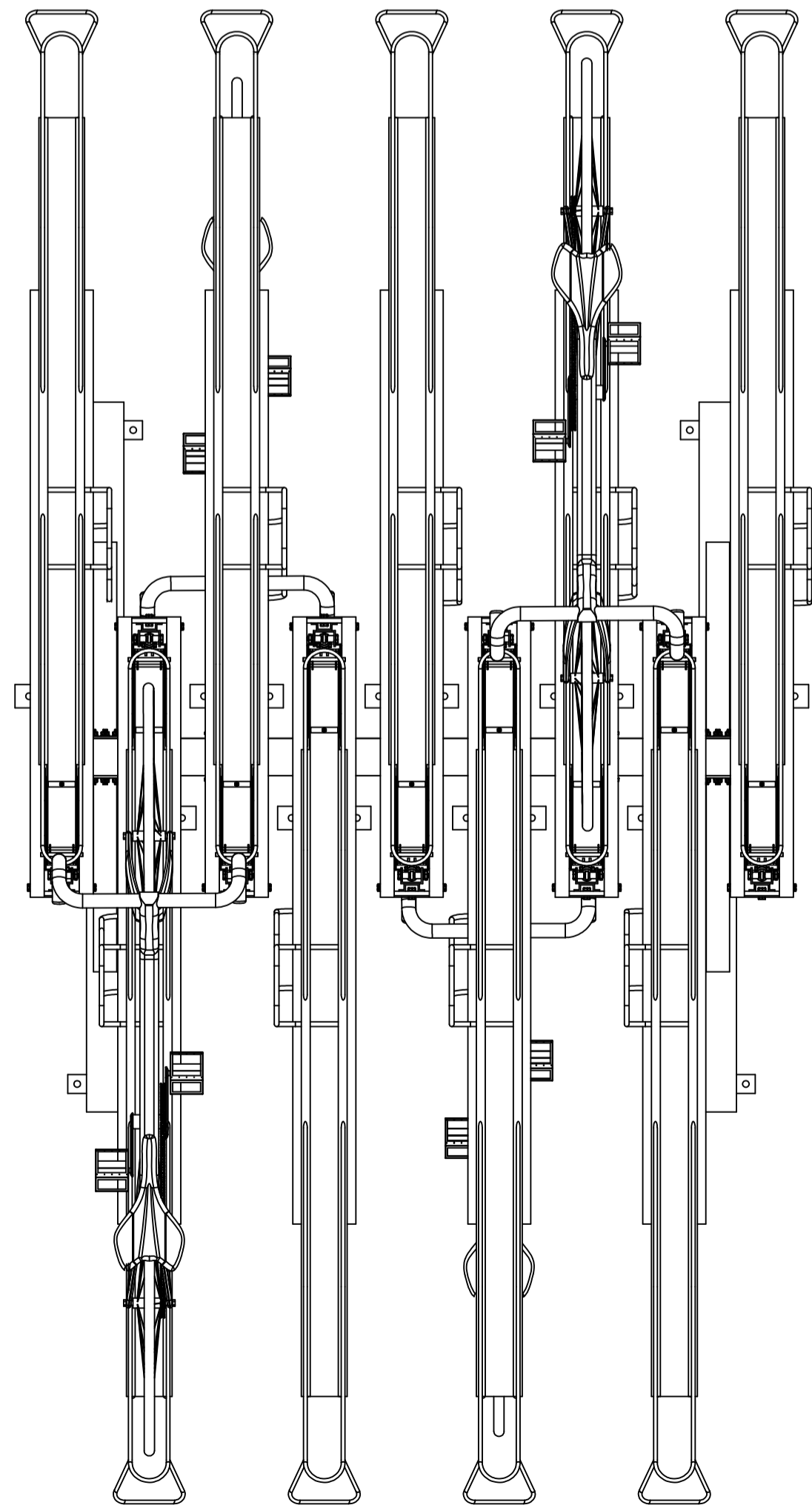
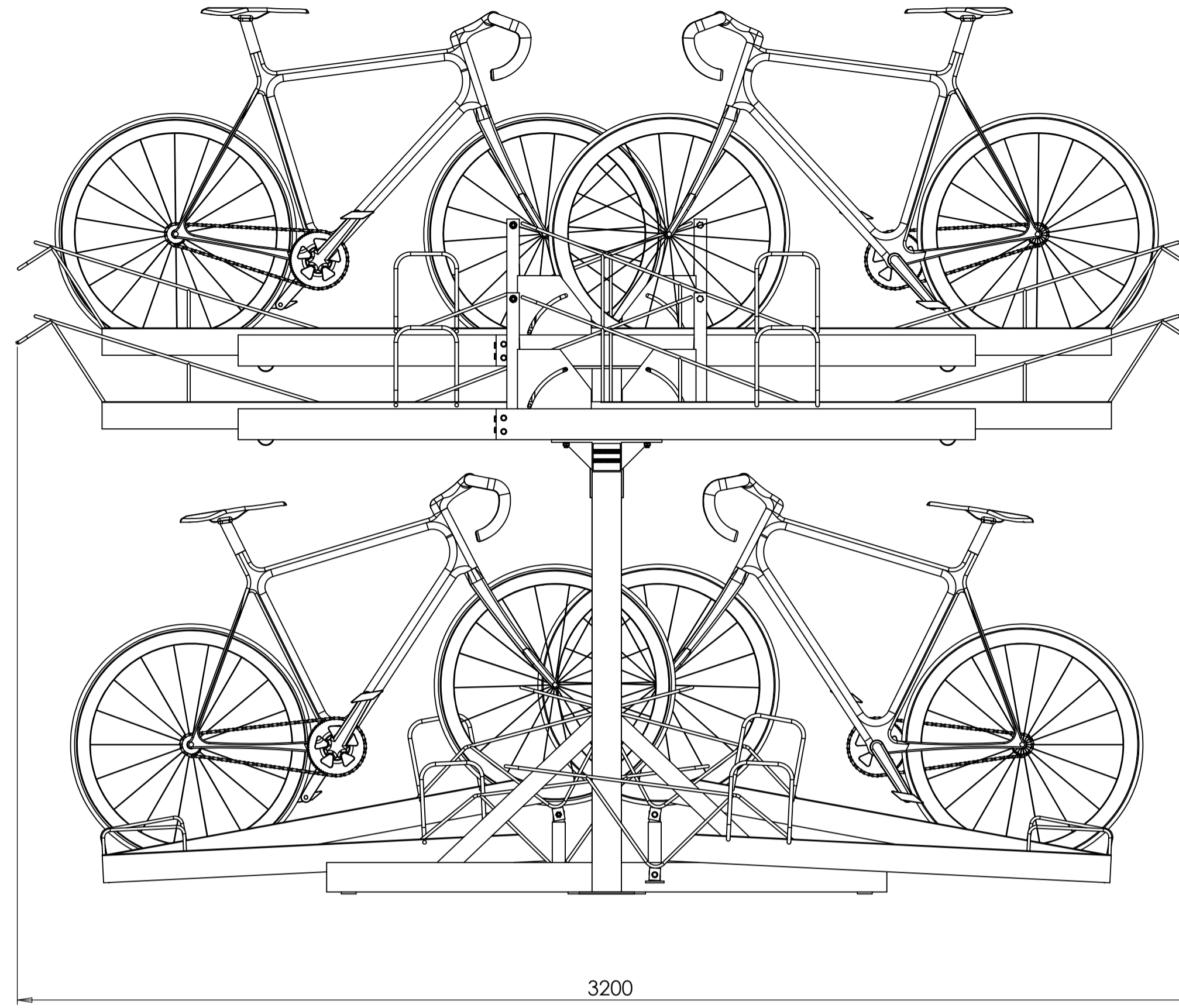
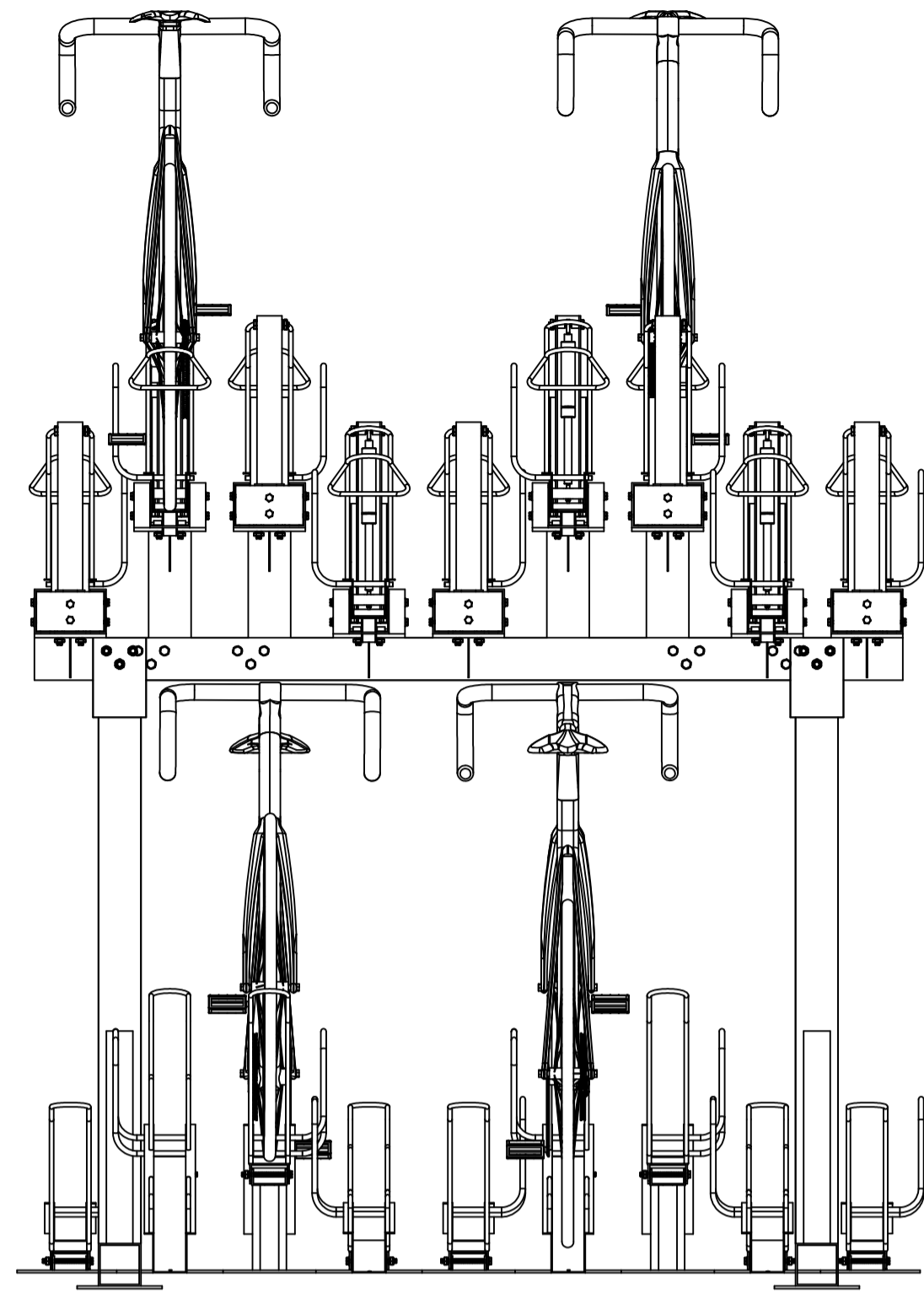


4 up 4 down
8 Space









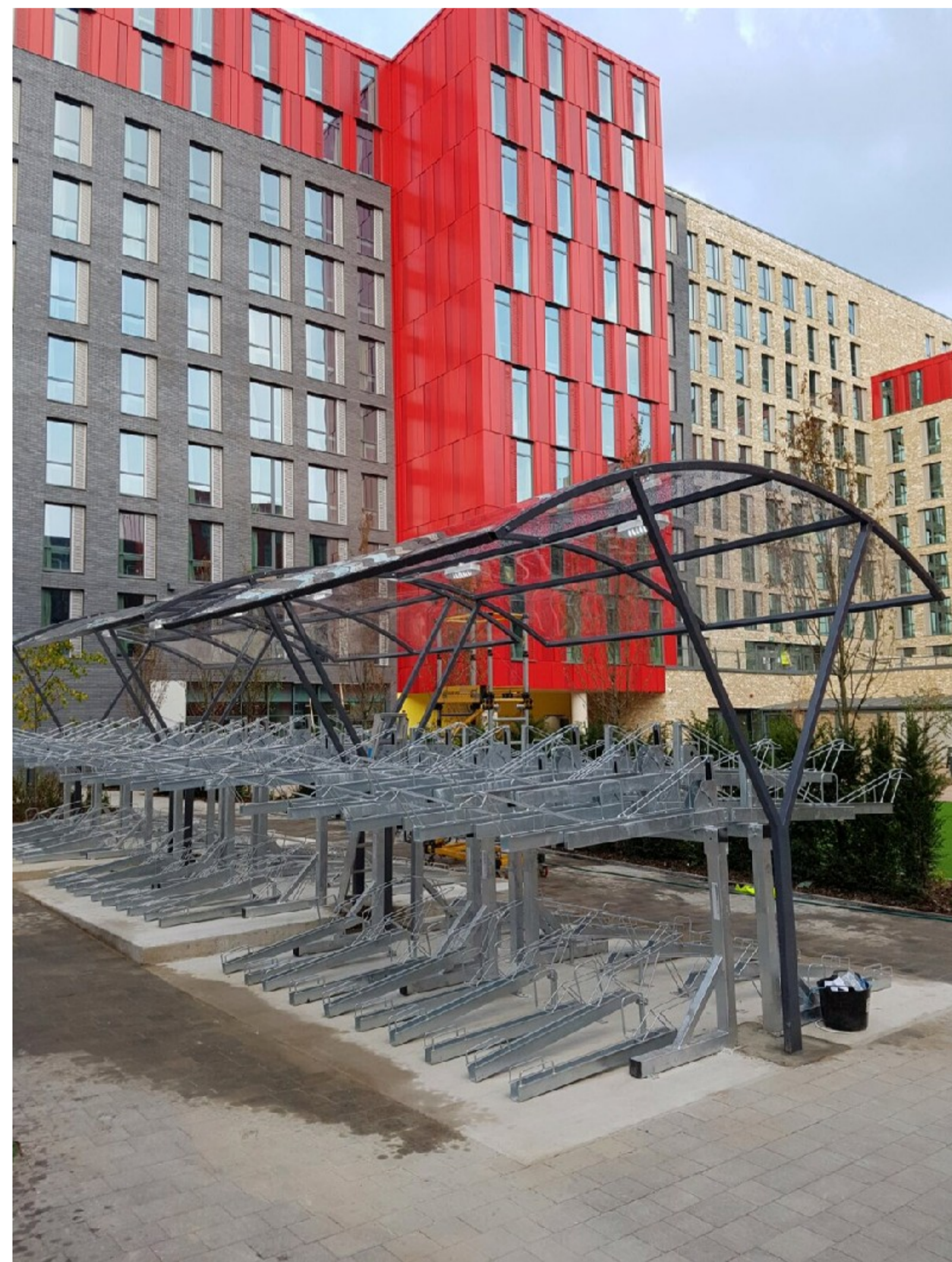
Two Tier Rack Installations



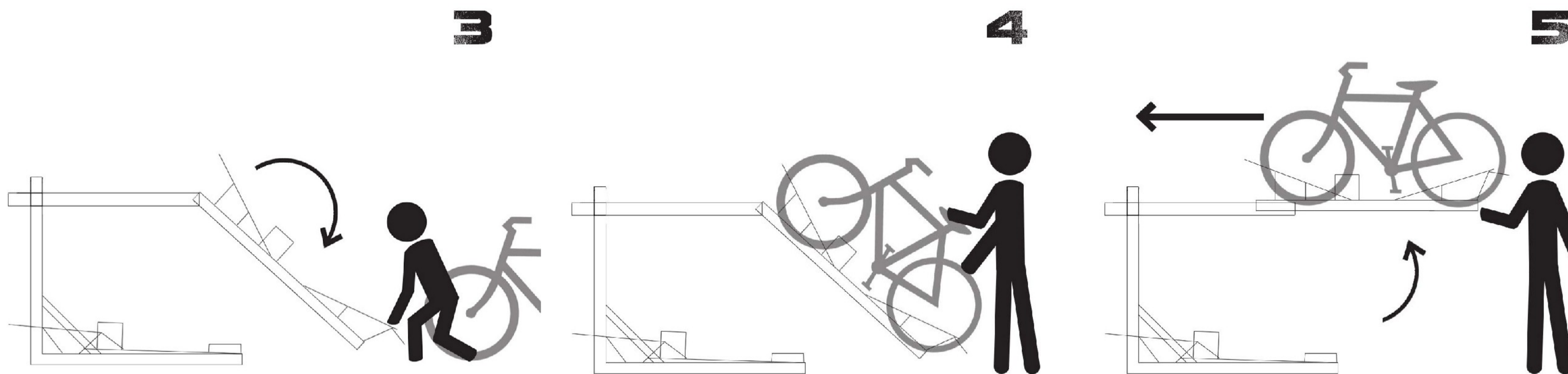
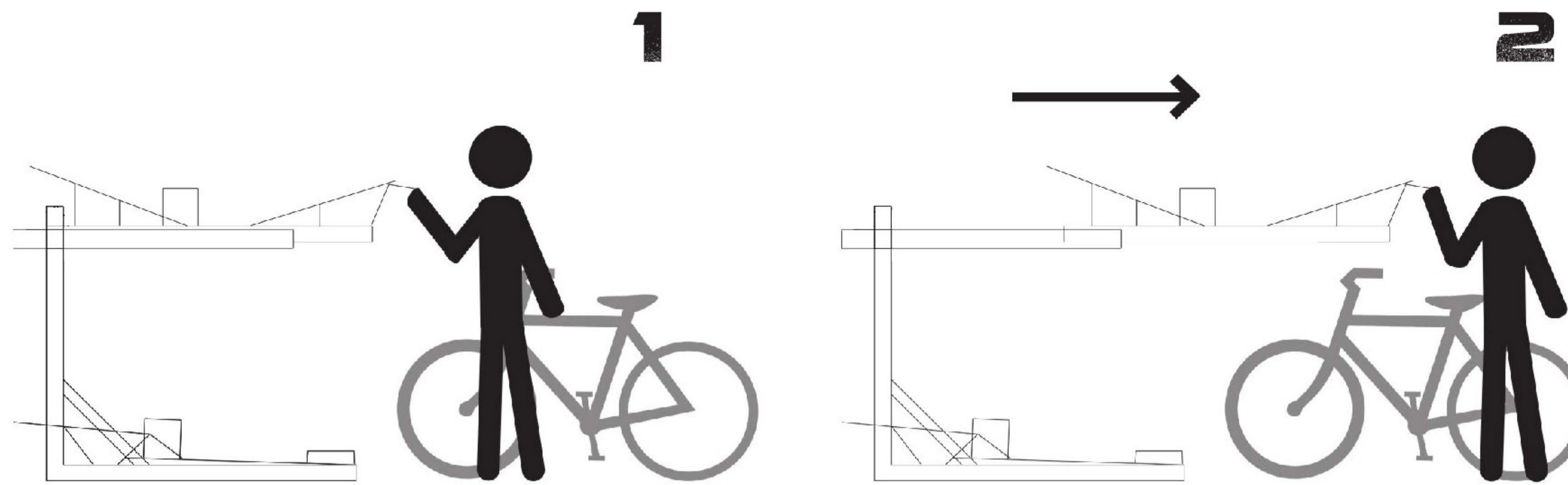
Two Tier Rack Gas Strut

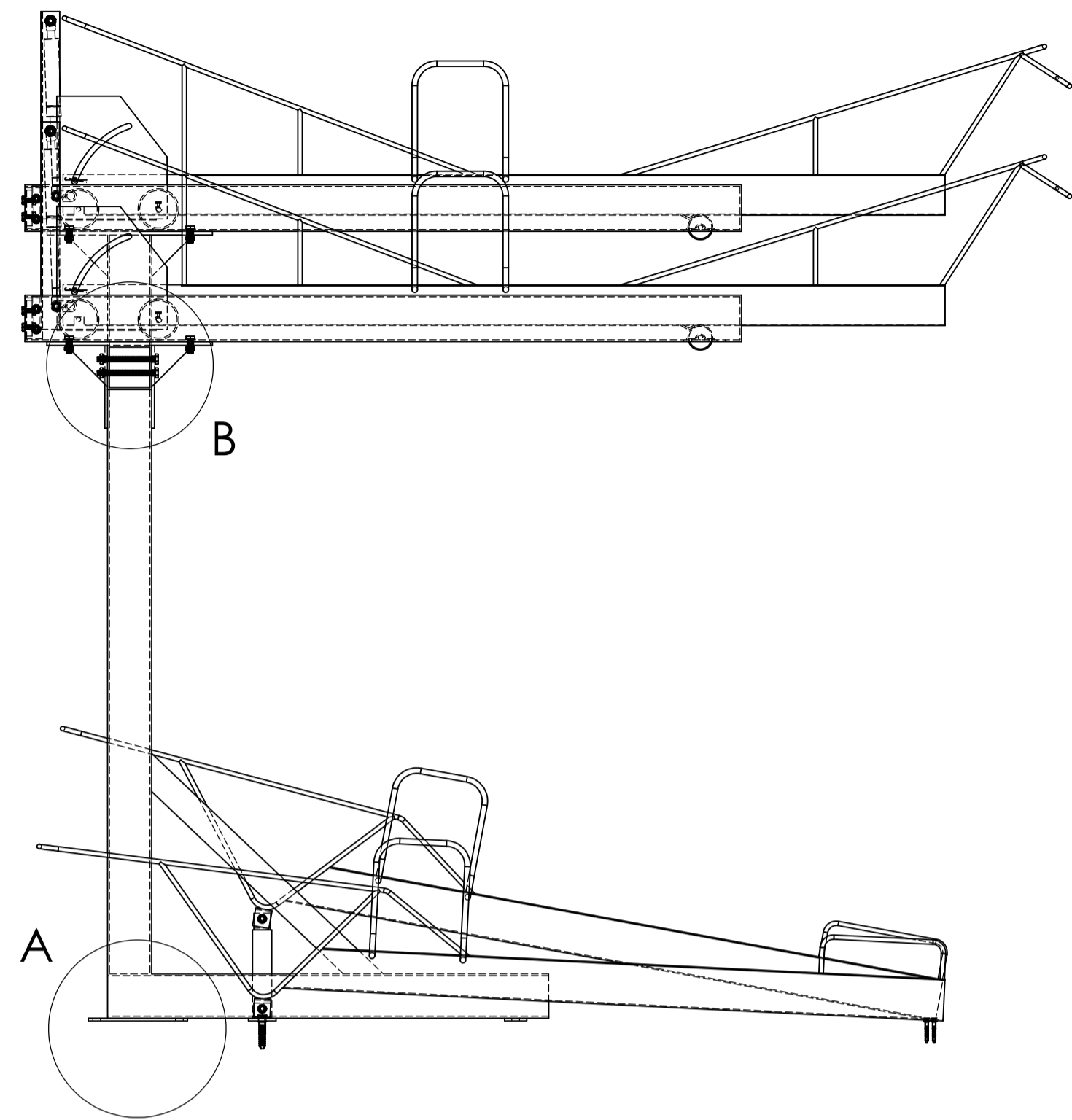


Sheltered Two Tier Rack Installations

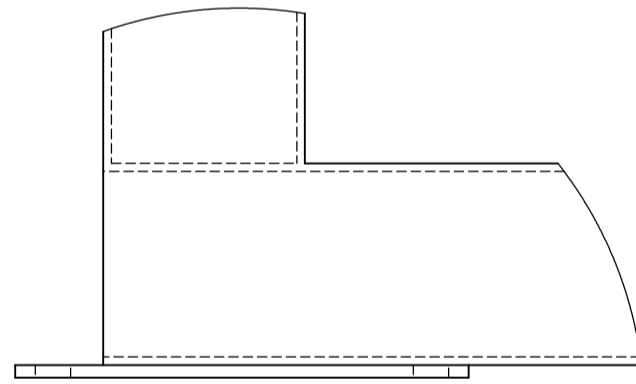


Two Tier Bike Rack Instructions

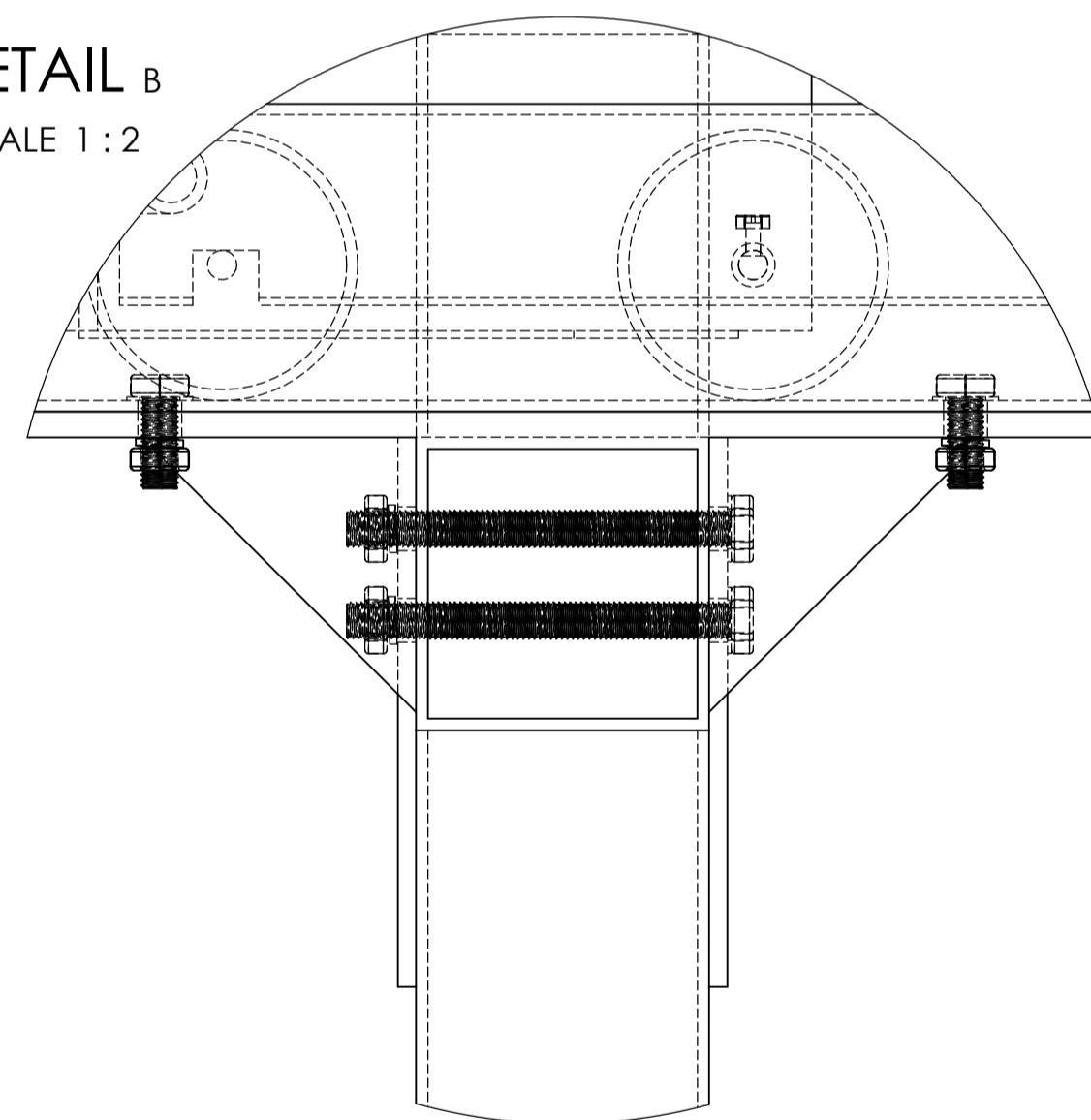




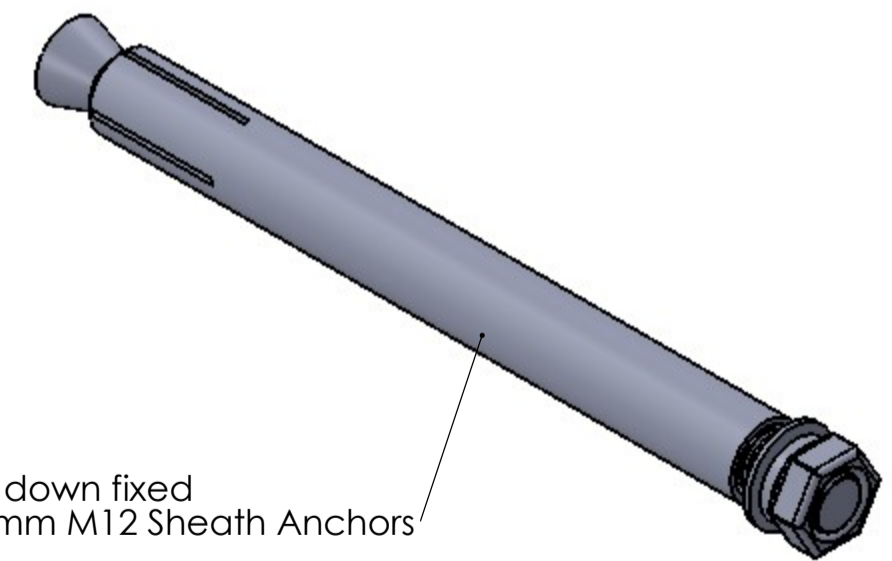
DETAIL A
SCALE 1:3



DETAIL B
SCALE 1:2



Bolt down fixed
150mm M12 Sheath Anchors



Frame is fixed using M10 Bolts

